



TRAINING DEVELOPMENT

WEL Training & Development

Taking Training to New Heights



Enabling our communities to thrive



Align with the CCF

On site assessment forms for :

- 1. Restricted Area Entry
- 2. Permit recipient
 - LV Permit Issuer
- 4. Vegetation
- 6. Overhead Construction
- 7. Underground Works
- 8. Switching
- 10. HV Supply Electrician

ON-SITE OBSERVATION ASSESSMENT

6A	Low Voltage Isolated Works
Purpose	Allows the worker to work on assets which are in an isolated state up to and including LVV.
Competency Class	6A Low Voltage Isolated Works 6C Overhead Service Connect and Disconnect 7C Low Voltage – Terminations 7E Low Voltage Jointing Polymeric only 7I Low Voltage Service Connections
Renewal Period	
Activity:	Date:
Employee:	Years of experience:
Assessor:	

On-site Observation Assessment is to be completed when a worker has been trained and has undergone sufficient experience in the discipline (under supervision) that demonstrates to the employer that the worker is competent to undertake to carry out the activity.

WEL Procedures
[SWP-0086 Pole erection](#)
[SWP-0112 LV pole termination at overhead pole](#)

Outcomes and Performance Criteria	
Outcome 1 Explain how to install and joint electricity network overhead conductors.	
Performance Criteria	
1. Identify the aluminium/aluminium alloy/copper conductor on the conductor board.	<input type="checkbox"/>
2. Explain the joint and jointing method you will use for the type and size of conductor.	<input type="checkbox"/>
• Cu on the bottom	

EVERY DAY Enabling our communities to thrive Version 1 Issued Date: September 2023

WEL Networks

ic conductor and prepare strands for jointing.	<input type="checkbox"/>
ies for Al and Cu	<input type="checkbox"/>
ension	<input type="checkbox"/>
nd and terminate conductor	<input type="checkbox"/>
where termination	<input type="checkbox"/>
replace electricity network pole structures	<input type="checkbox"/>
z and size, structure arrangement, and installation method.	<input type="checkbox"/>
ing arrangements.	<input type="checkbox"/>
to one) length of pole)	<input type="checkbox"/>
> face an angle pole) e service plans.	<input type="checkbox"/>
on permit.	<input type="checkbox"/>
quired for the job and attach to the pole.	<input type="checkbox"/>
nants	<input type="checkbox"/>
irements)	<input type="checkbox"/>
ment process.	<input type="checkbox"/>
	<input type="checkbox"/>
	<input type="checkbox"/>
8. What are the rules around O/H lines crossing railway tracks?	<input type="checkbox"/>
• No sleeves in the crossing span • Double armed or terminated on both sides • Span no more than 50m	
9. How deep do you bury a softwood pole?	<input type="checkbox"/>
• 1/6 the length of the pole (i.e. 9m pole bury 1.5m)	

EVERY DAY Enabling our communities to thrive Version 1 Issued Date: September 2023

Assessor name:	Signature:	Date:
----------------	------------	-------

EVERY DAY Enabling our communities to thrive Version 1 Issued Date: September 2023

Enabling our communities to thrive



Enabling our communities to thrive

A large, well-lit room with a grey carpeted floor. Numerous people, mostly men, are seated at long white tables arranged in rows. They are all wearing bright orange high-visibility safety vests over dark clothing. Each person has a computer monitor in front of them, and many are looking at the screens. Some are wearing headsets. The room has large windows with white blinds. In the foreground, a person is seen from the back, wearing a headset and looking at a laptop. To the right, there is a long wooden desk with some papers and a small object on it. The overall atmosphere appears to be a professional training or simulation environment.

Learning Management System

Competency is managed in WEL Educated, our Learning Management System (LMS).

The LMS is Totara Learn hosted by Catalyst.

Supervisors and managers have access to their staff record of learning.



My Learning

- Learning Plans
- Bookings
- Record of Learning

Upcoming Certifications

No certifications due

Quick Links

- Operating Procedures
- Safe Working Procedures
- LV Works Management Procedures

Last Course Accessed

1ECP - OR101 Advanced

100%

Current Learning

3ACP - Primary Works Management Permit Holder Lines	<div><div></div><div>66%</div></div>
168651 Field Services Work Compliance Process	<div><div></div><div>0%</div></div>
Safety in Design Advanced	<div><div></div><div>71%</div></div>

Displaying 1 - 3 of 3 results

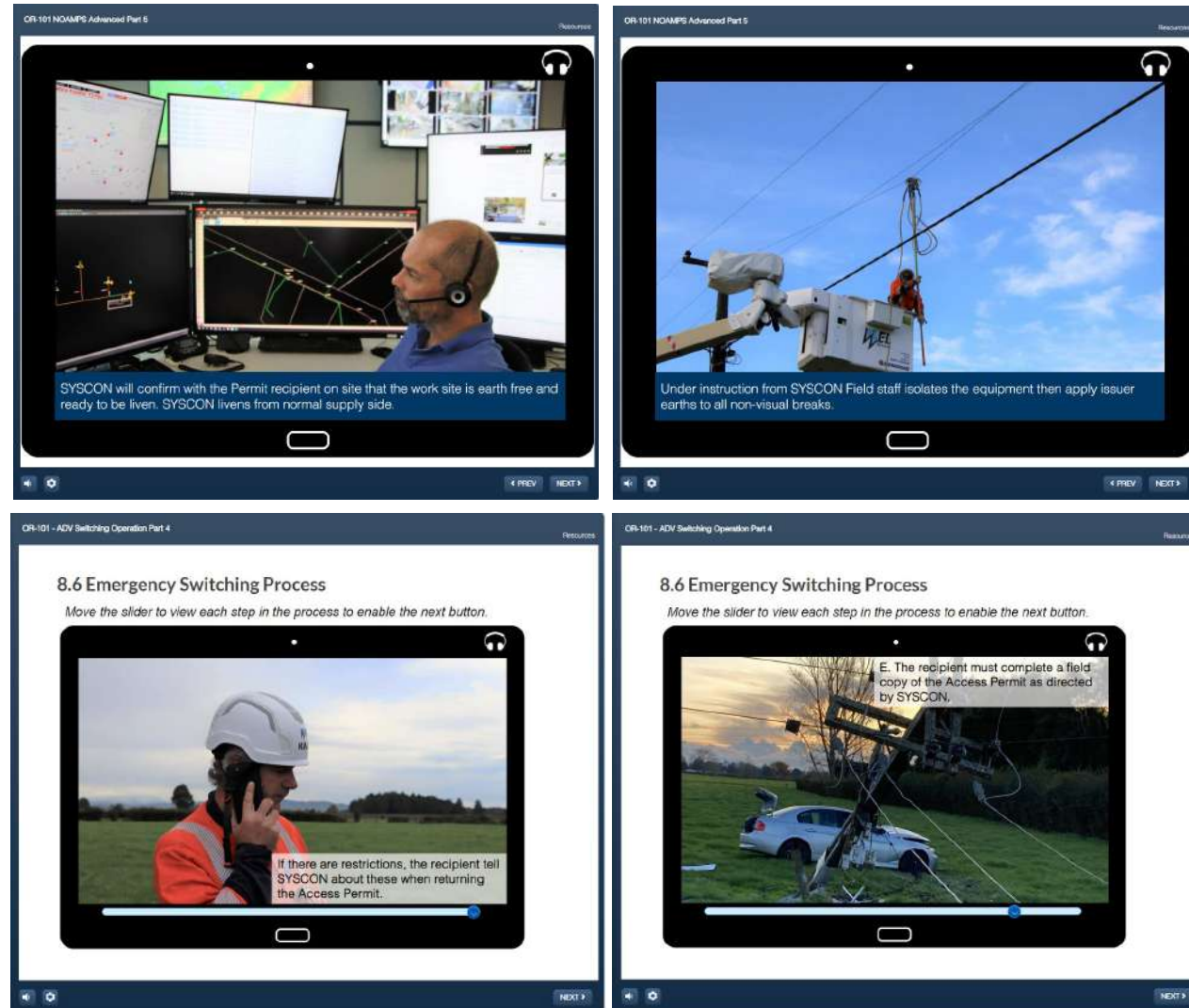
Enabling our communities to thrive

eLearning

WEL training is developed in house with our training team and learning modules placed in WEL Educated.

The learning module content is delivered by staff via video, photos and audio.

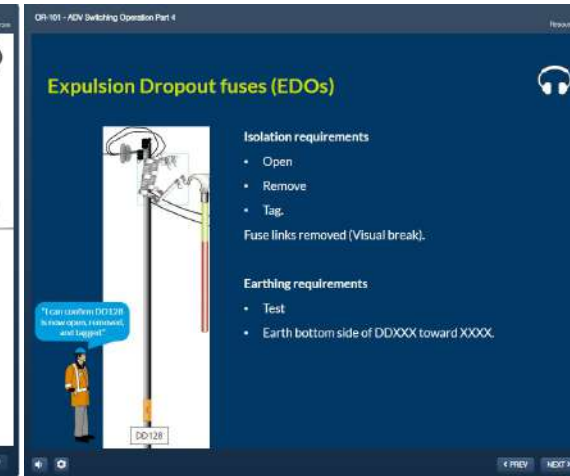
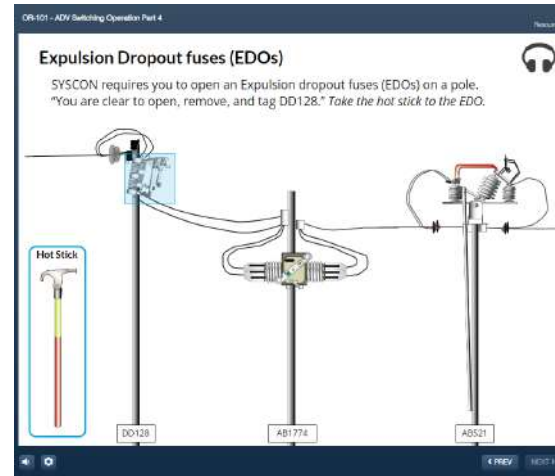
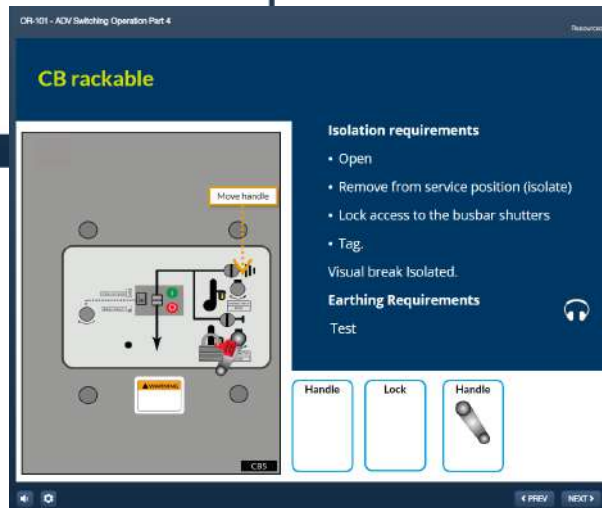
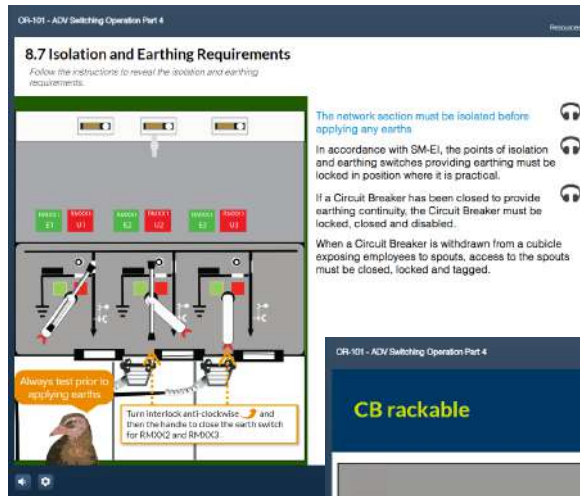
Network Outage Access Management Permits and Switching (NOAMPS) learning has recently been completed by over 300 staff and contractors.



Enabling our communities to thrive

eLearning

WEL training is interactive to keep trades people engaged.



Enabling our communities to thrive

Something Different

WEL Informed Podcast, LV Works Management Process.

Episode

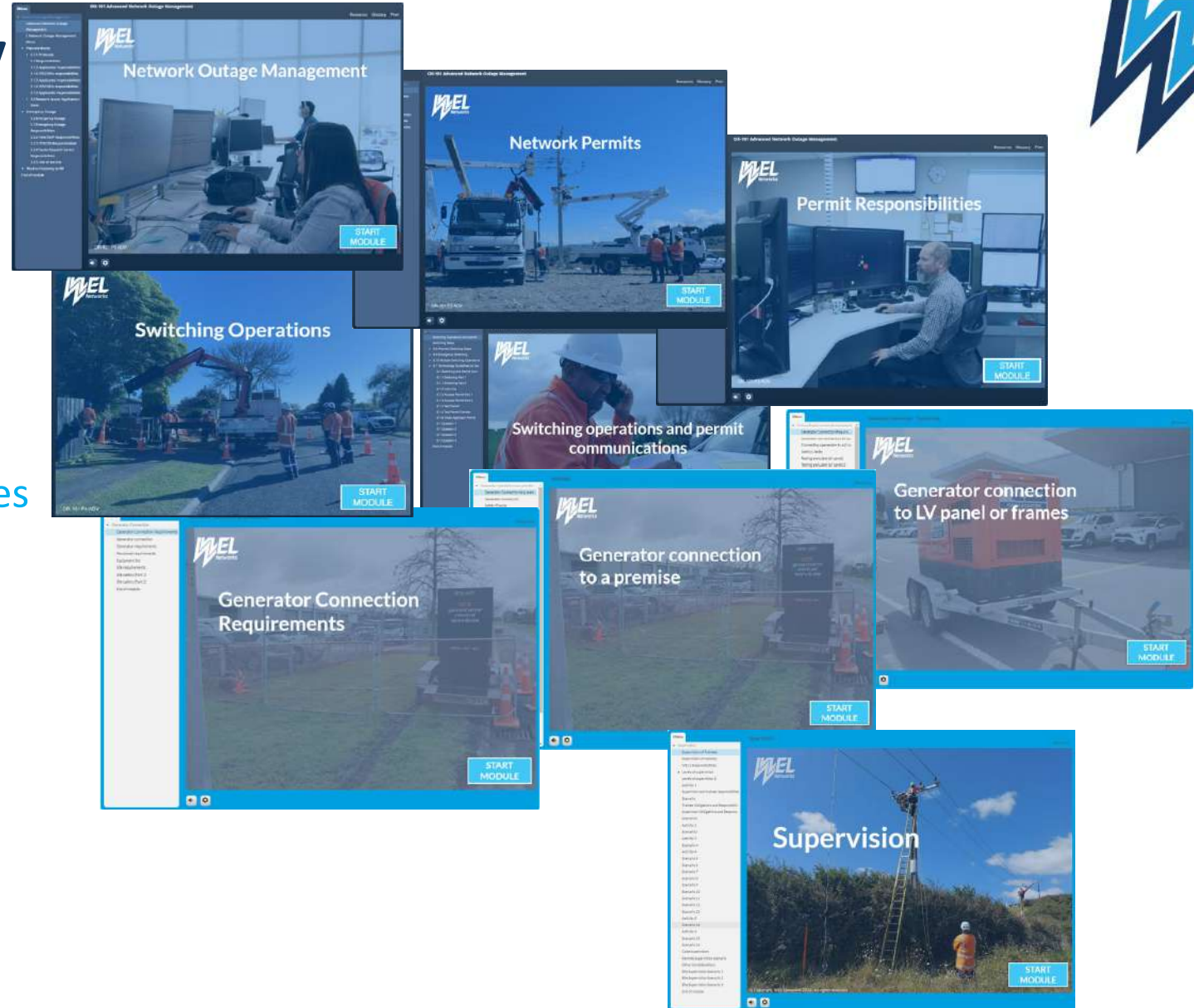
1. Purpose / Scope
2. Planning work
3. LV Work Permits
4. Live LV Work
5. LV Switching Operations
6. Isolation and bonding



Development Priority



1. NOAMPS
2. Generator connection
 - a) J-type
 - b) Din type
 - c) Generator port
 - d) Single premises
3. Supervision of staff / trainees
4. TTM Worker
5. Data Logger Connection
6. Substation Battery Testing
7. Working on isolated overhead high voltage lines
8. LV Work Management



Enabling our communities to thrive

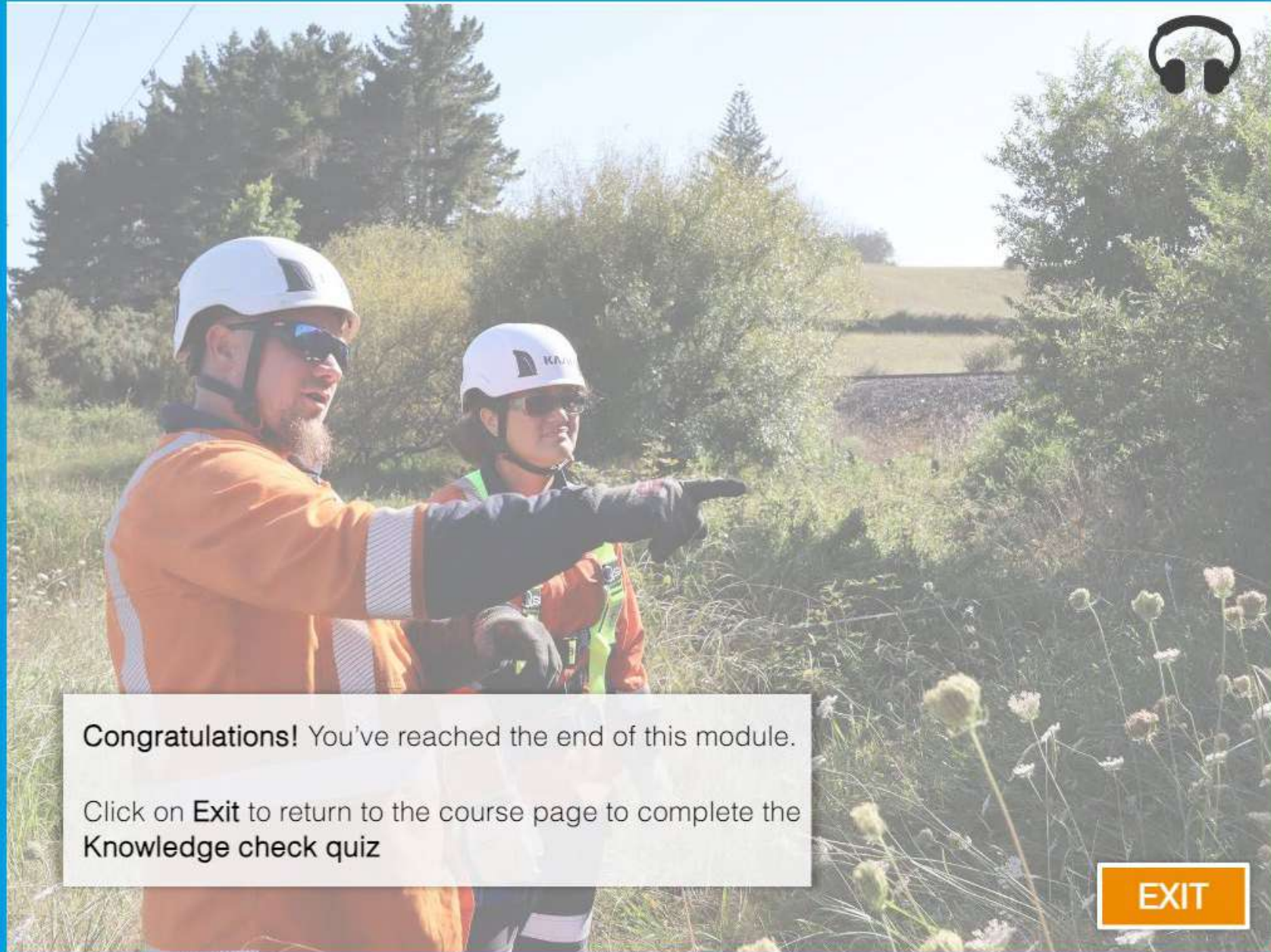
Questions

Menu

Supervision

- Supervision of Trainees
- Supervision of trainees
- Trainee PEW
- Trainee PEW
- WEL's Responsibilities
- Levels of supervision
 - Levels of supervision 2
 - Activity 1
 - Supervisor and trainee responsibilt...
 - Scenario
 - Trainee Obligations and Responsibil...
 - Supervisor Obligations and Respons...
 - Scenario2
 - Activity 2
 - Scenario3
 - Activity 3
 - Scenario 4
 - Activity 4
 - Scenario 5
 - Scenario 6
 - Scenario 7
 - Scenario 8
 - Scenario 9
 - Scenario 10
 - Scenario 11
 - Scenario 12
 - Scenario 13
 - Activity 5
 - Scenario 14
 - Activity 6
 - Scenario 15
 - Scenario 16
 - Good supervision
 - Remote Supervision scenario
 - Site Supervision Scenario 1
 - Site Supervision Scenario 2
 - Site Supervision Scenario 3
 - End of module

Supervision



Congratulations! You've reached the end of this module.

Click on **Exit** to return to the course page to complete the Knowledge check quiz

EXIT

